



社企

Power of Good

香港社企概況
Hong Kong Social Enterprise
Landscape Study
2012-13

製作單位
Produced by



社企力 The Power of Good

社會新路向

Giving New Direction to Society

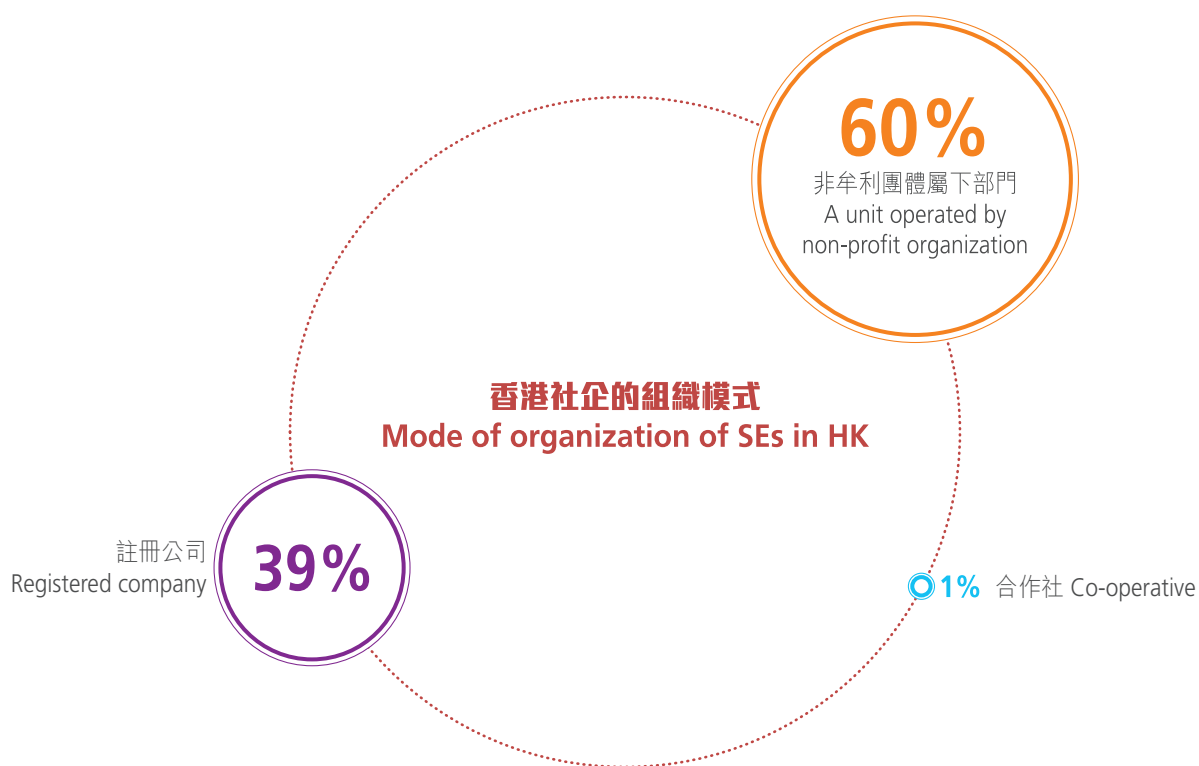


社企力從何而來？ What is makeup of SE Power ?

香港社企 單位數目

No. of SE
unit in HK

年份 Year



有回答此問題的社企數目 : **376**
Number of answered SE

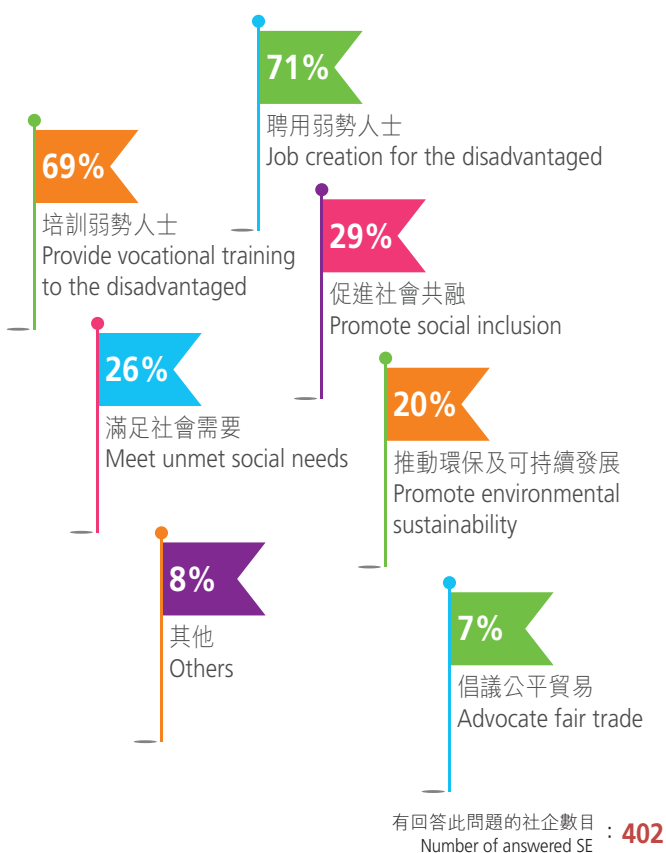
近年，政府、民間團體及商界積極推動社企發展，社企漸漸成為一股重要的力量。這股社企力量由不同界別匯聚，以創新、跨領域的方式回應社會問題。

In recent years, the Government, civil organizations and the business sector actively mobilize the development of social enterprise, which is becoming an emerging force of driving social change, to address and response to the social needs through innovative business approaches.

社企為社會注入了甚麼價值？ What social value added by SE to the society ?

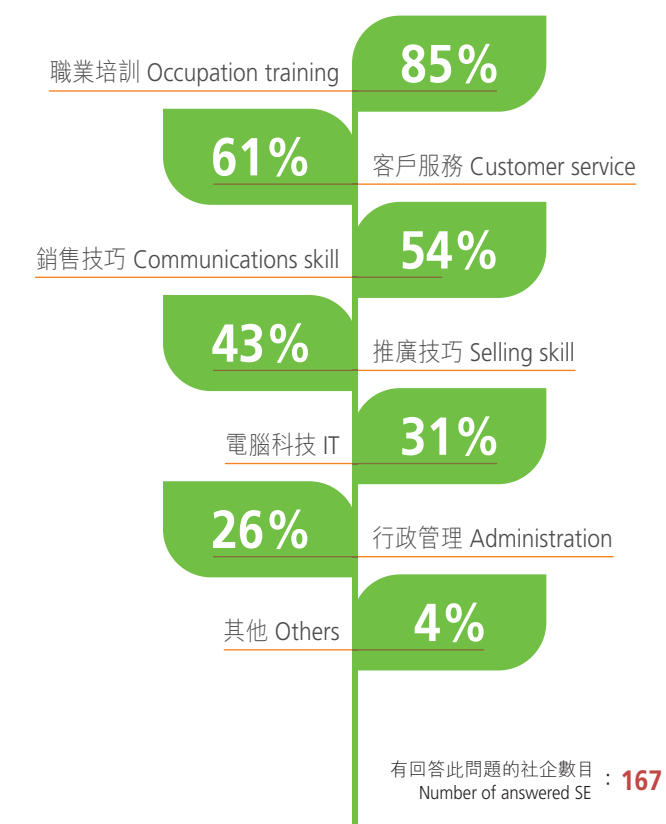
社企的社會目標 Social objectives of SE

*可選多於一項 Multiple options



為弱勢員工提供培訓的種類 Types of training provided to disadvantaged employees

*可選多於一項 Multiple options



為弱勢員工提供培訓的平均時數 Average no. of training hours provided to deprived workers



平均時薪 Average hourly rate



社企「以人為本」的特質，持續地為社會創造價值。

“People-oriented” is the most prominent trait which continuously adds values to the society.

社企行業分佈是怎樣，啟動資金從哪裡來 ?

What are the business natures and the capital sources of SE

社企的行業分佈 Business nature of SE

有回答此問題的社企數目 : 394
Number of answered SE

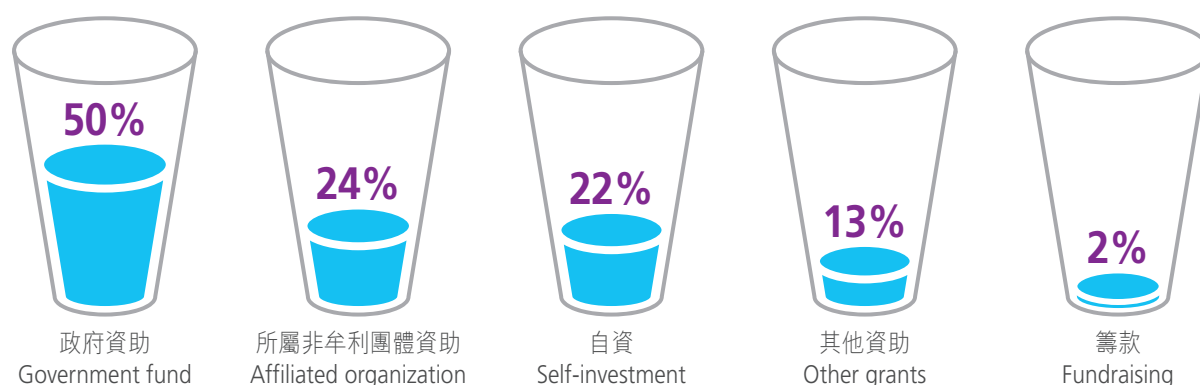
*可選多於一項 Multiple options



啟動資金來源 Capital sources

有回答此問題的社企數目 : 326
Number of answered SE

*可選多於一項 Multiple options



近年不少民間團體及私人機構自資開辦社企，為社企發展加入創新思維，例如各類型廢物升級再造產品為舒緩城市廢物過多的社會問題提供解決方案。

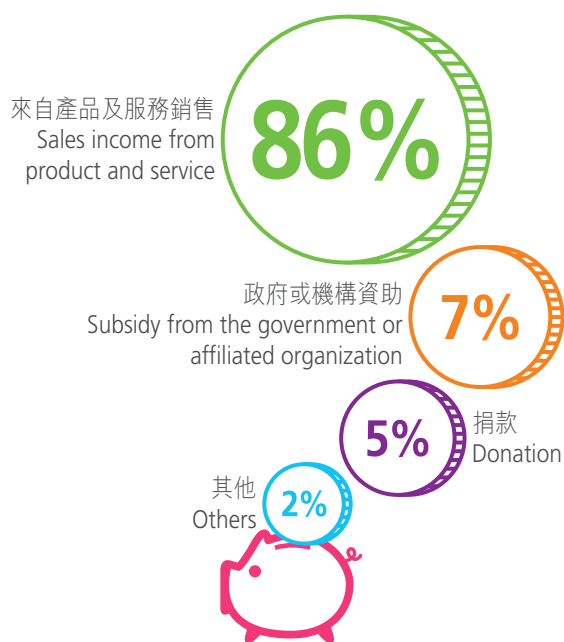
More and more civil organizations and private enterprises start up social enterprise, not only bringing innovative business solutions, but also help in tackling various social problems. For example upcycling business which can ease the solid waste problem.

社企的財政狀況如何 ?

How is their financial performance ?

收入來源百分比

Distribution of income sources

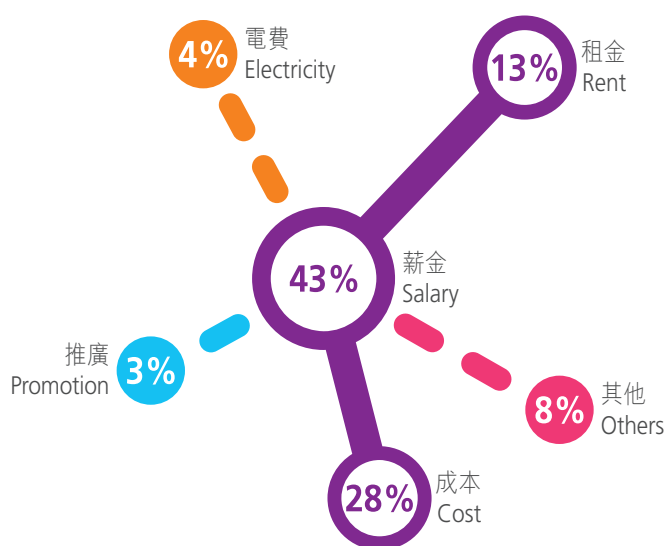


有回答此問題的社企數目 : 184
Number of answered SE : 184

支出分佈百分比

Distribution of expenses

有回答此問題的社企數目 : 57
Number of answered SE : 57



社企能夠自負盈虧嗎?

Does SE financially sustained?

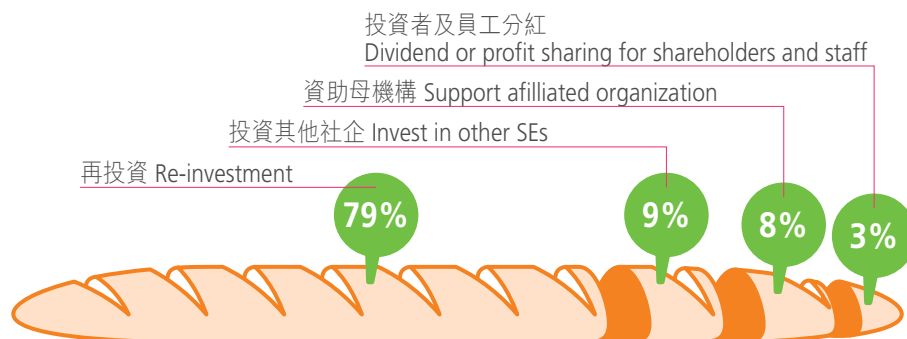


有回答此問題的社企數目 : 48
Number of answered SE : 48

盈利運用

Distribution of profit

有回答此問題的社企數目 : 32
Number of answered SE : 32



社企主要收入來自銷售，而非捐助。社企將所得的絕大部份盈利投放於社企本身的發展。

Social enterprise achieves financially sustainable through sales activities rather than donation. Most of the retained earnings will be invested for business development.

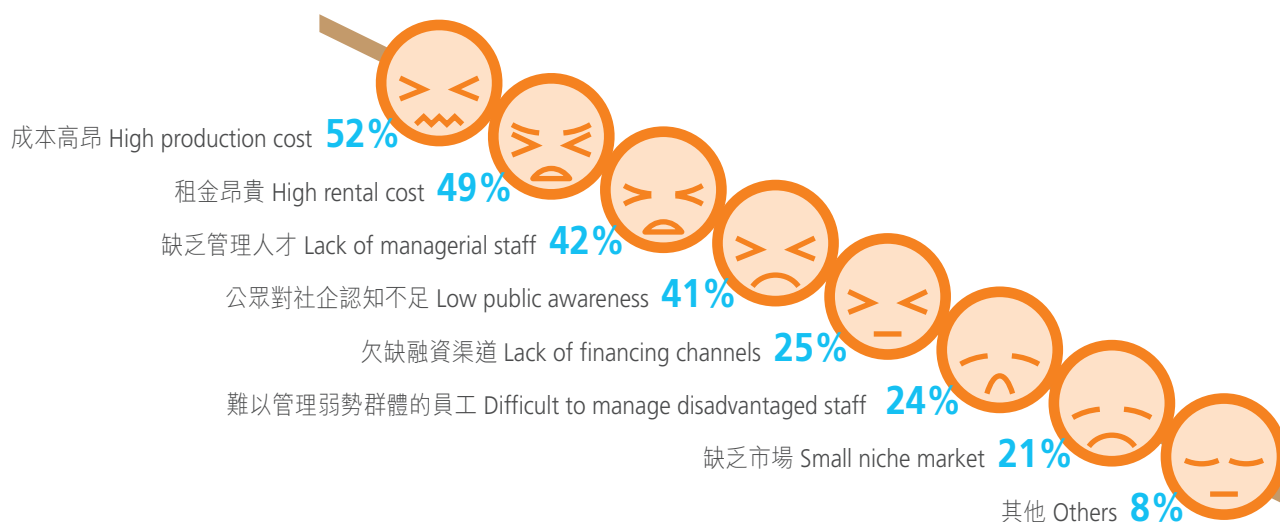
它們期望得到的支持 ? What kind of supports they need ?

社企所遇到的困難

Difficulties encountered by SE

*可選多於一項 Multiple options

有回答此問題的社企數目 : 188
Number of answered SE



社企建議的政策配套

Supporting measures suggested

*可選多於一項 Multiple options

有回答此問題的社企數目 : 184
Number of answered SE



社企期望更完善的配套措施，讓它們可發揮更大力量。

SEs expect more supporting measures to build up their capacity.



「社聯—滙豐社會企業商務中心」是香港社會服務聯會屬下的社企協作平台，服務全港逾400個社企項目及其受助人士。我們通過各項伙伴計劃，促進商界、專業團體與社企之合作，並透過各項公眾教育活動，倡導責任消費與社會創新。

HKCSS-HSBC Social Enterprise Business Centre (SEBC) is a social enterprise collaborative platform under the Hong Kong Council of Social Service (HKCSS) with a mission to support over 400 social enterprises and their beneficiaries. We initiate partnership among business sector, professional groups and social enterprises through a variety of collaborative projects. We also advocate responsible consumption and social innovation by means of public education campaigns.

我們由2006年起收集香港社企資料並製作《香港社企指南》。由2011年開始，《社企指南》獲得民政事務總署及滙豐銀行慈善基金支持與贊助。

SEBC collected social enterprise figures in HK since 2006 and publishes 'Social Enterprise Directory' annually. The Directory is also supported and sponsored by the Home Affairs Department and the Hongkong Bank Foundation since 2011.

如欲索取更多社企資訊，請與我們聯絡。如需引用本小冊子內的資料，請列明出處。

Please contact us for more social enterprise information. Please quote the original source if you need to cite the figures in this leaflet.

社聯 — 滙豐社會企業商務中心 HKCSS — HSBC Social Enterprise Business Centre (SEBC)

香港灣仔軒尼詩道15號溫莎公爵社會服務大廈10樓1002室
Rm. 1002, 10/F., Duke of Windsor Social Service Bldg., 15 Hennessy Rd., Wanchai, Hong Kong

T: 2876 2491 F: 2876 2496 E: sebc@hkcss.org.hk www.socialenterprise.org.hk

